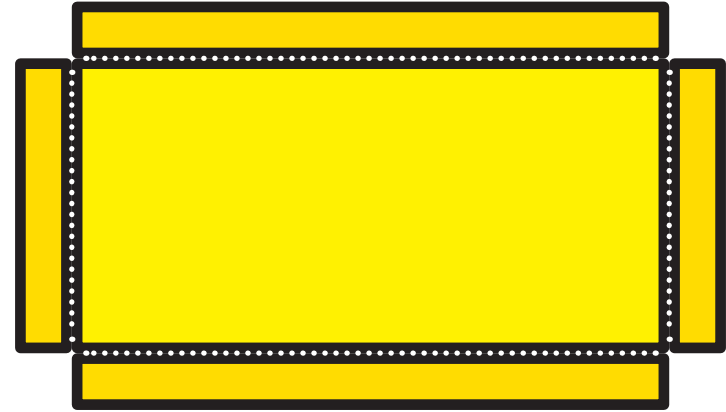


THE TABLE FOR BREAD

THE TABLE FOR BREAD



© Mark Barry 2014 | visualunit.me | Please do not republish without permission, but feel free to copy for personal use.

EXODUS 25:23-30; 37:10-16



LENGTH =
2 CUBITS
3 FEET
1 METRE

WIDTH =
1 CUBIT
1 1/2 FEET
0.5 METRE

HEIGHT =
1.5 CUBITS
2.25 FEET
0.7 METRE

